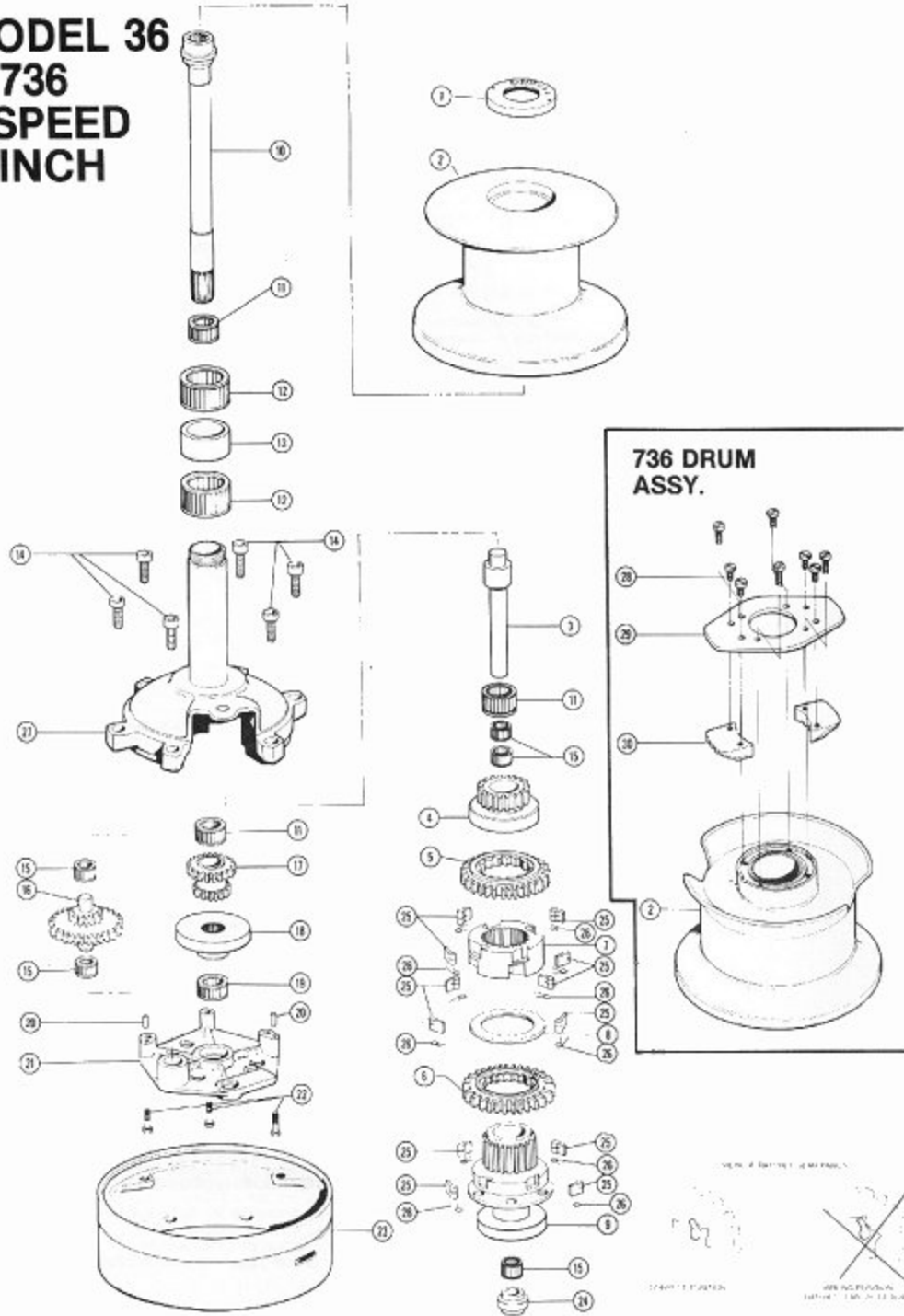


MODEL 36 & 736 2-SPEED WINCH



Item No.	Part No.		Description	Qty.	Item No.	Part No.		Description	Qty.
	Model 36	Model 736				Model 36	Model 736		
1	B-35903	B-35903	Drum Nut	1	19	B-00405	B-00405	Bearing	1
2	D-11161	—	Drum—Aluminum	1	20	B-11216	B-11216	Dowel Pin	2
All.	D-11103	—	Drum—Stainless	1	21	C-35724	C-35724	Gear Cover	1
All.	—	D-35667	Drum—Aluminum (Stainless Sleeve)	1	22	A-01091-24	A-01091-24	Hex Head Cap Screws	3
3	B-35739	B-35738	Final Drive Shaft	1	23	X-35978	X-35978	Base Assembly	1
4	C-35043	C-35943	Final Drive Pinion	1	24	B-36026	B-36026	Ratchet Hub Support	1
5	C-35048	C-35946	High Speed Ratchet Gear (28 Teeth)	1	25	B-00330	B-00330	Pawl	12
6	C-35047	C-35947	Low Speed Ratchet Gear (30 Teeth)	1	26	B-00209	B-00209	Pawl Spring	12
7	C-35804	C-35894	Ratchet Hub	1	27	D-35798	D-35798	Gear Housing	1
8	C-35805	C-35895	Ratchet Hub Washer	1	28	—	A-01092-12	Cap Screw	6
9	C-36027	C-36027	Pawl Carrier	1	29	—	B-35575	Cover	1
10	C-35738	C-35738	Mainshaft	1	30	—	X-35961	Cleat Assembly	2
11	B-00403	B-00403	Roller Bearing	4					
12	C-00422	C-00422	Roller Bearing	2					
13	B-35748	B-35748	Bearing Spacer	1					
14	A-01110-16	A-01110-16	Socket Head Cap Screws	6					
15	B-00426	B-00426	Roller Bearing	4					
16	X-35977	X-35977	3rd Speed Idler Gear Assembly	1					
17	C-35940	C-35940	Center Pinion	1					
18	C-36028	C-36028	Mainshaft Gear Support	1					

MODEL #36 2-SPEED DISASSEMBLY PROCEDURE

- Before starting the disassembly, spread out some newspaper or a clean cloth. Place the parts on it for their protection as well as the deck's protection.
- Remove the drum retaining nut (1) using a universal deck plate key.
- Remove the drum. NOTE: The drum bearings (12) may come off with the drum—be careful not to let them fall out.
- Remove the drum bearings (12) and the bearing spacer (13).
- Remove the six 3/8" Allen screws (14) holding the gear housing (27) to the base, and lift the housing out of the base. It may be necessary to tap the gear housing with a soft hammer to release it from the base.
- Turn the gear housing assembly upside-down, being careful not to let the mainshaft (10) drop out. To assist in further disassembly, the drum can be used as a holder for the inverted gear housing. Insert the stem of the gear housing into the top of the drum.
- Remove the three 1/4" cap screws (22) using a 7/16" wrench and carefully remove the gear cover (21). It may be necessary to tap the cover with a soft hammer to remove it.
- Remove the mainshaft gear support (18) and its bearing (19). Also remove the ratchet hub support (24).
- Remove the idle gear assembly (16) and its upper and lower bearings (15).
- Remove the complete stack of gears on the final drive shaft (3), part numbers (4) through (8). NOTE: Keep this assembly together until you are ready to clean it. The details for disassembly start at step number (15).
- Remove the two bearings (11 and 15) exposed by removal of the final drive gear stack, also remove the bearing (15) in the bottom of the ratchet hub support (24).
- Remove the center pinion (17).
- Lifting the housing (27), remove the mainshaft (10) and its upper and lower bearings (11).
- The final drive shaft (3) is pressed into the gear housing (27), and should only be removed if damaged.
- Remove the final drive pinion (4) and its pawls and springs (25) and (26). NOTE: When removing the pawls, squeeze the spring ends together while sliding the pawl from its pocket. If this is not done, the pawl spring can shoot out and be lost.
- Remove high speed ratchet gear (5) and the ratchet hub (7), which can be removed by lifting it off the splines of the pawl carrier (9). NOTE: Be sure to note which side of the gear is up, so that it may be reinstalled correctly.
- Remove the ratchet hub washer (8), and the low speed ratchet gear (6), from the pawl carrier (9).
- Remove the pawls and their springs (25 and 26) from the ratchet hub (7) and the pawl carrier (9).
- Wash all parts in petroleum solvent (fuel oil or equivalent) including the inside of the drum. Replace any pieces showing damage or excessive wear. During the assembly process, all gears and bearings should be liberally greased using Barient Barlube. The pawls and their pockets should be lubricated with light machine oil. NOTE: Never use grease on pawls as they must be allowed to move freely in their pockets.

REASSEMBLY

20. Install the pawls and their springs (25 and 26) into the ratchet hub (7) and the pawl carrier (9). Lubricate each pawl with light oil.
21. Install the low speed ratchet gear (6) (30 teeth) onto the pawl carrier (9), then install the ratchet hub washer (8).
22. Install the high speed gear (5) (28 teeth) onto the ratchet hub (7), then slide the gear and hub onto the pawl carrier (9).
23. Install the final drive pinion (4) onto the remaining set of pawls on the ratchet hub (7).
24. Install bearing (15) into bottom of pawl carrier (9).
25. Install the mainshaft (10) with its upper and lower bearings (11) (greased) into the gear housing (27). The drum nut (1) can be installed to hold it in place.
26. Install the center pinion (17) onto the mainshaft (10).
27. Install the two bearings (11 and 15) onto the final drive shaft (3), then install the complete stack of gears sub-assembled in steps (20) through (24).
28. Install the idler gear (16) with its upper and lower bearings (15).
29. Install the mainshaft gear support (18) and its bearing (19), also install the ratchet hub support (28).
30. Install gear cover (21) and its three screws (22). Tighten securely.
31. Turn the assembly over and install it into the base. Use the six 3/8" Allen screws to secure it. Install the two drum bearings (12) (liberally greased) with the spacer (13) between them onto the gear housing, then install the drum.
32. Install the drum nut and tighten.

MOUNTING INSTRUCTIONS

1. Remove the drum per the disassembly instructions.
2. Remove the gear housing assembly from the base by removing the six 3/4" Allen screws.
3. Locate the winch base in the desired location. NOTE: Be sure the area is smooth and flat.
4. Locate the mounting hole locations and drill the required holes using a 17/32" drill. Be sure adequate reinforcement is provided to take the loads produced by the winch.
5. Mount the case using 1/2" stainless or bronze flat head machine screws with nuts and flat washers. NOTE: Do not block the drain grooves in the base with bedding compound.
6. Reassemble the winch.

DISASSEMBLY TOOLS REQUIRED

Allen wrench 5/16"
 Small screwdriver
 Universal deck plate key
 7/16" wrench

MONTHLY MAINTENANCE

Periodic maintenance is recommended to ensure the proper operation of your Barient product. Winches should be flushed with fresh water after use in a salt water environment. Chrome and stainless drums should be polished with a good chrome cleaner. Aluminum drums should be kept covered when not in use, to protect against fading of the black anodizing. However, vinyl or rubber covers which do not allow the moisture in the winch to dry should not be used.

The following maintenance should be carried out twice a season:

1. Remove the drum using the disassembly procedure, Steps 1, 2 and 3.
2. Insert a handle and rotate the mainshaft in both directions (also in high range for 3-speed winches). If winch does not operate freely, continue with the complete disassembly procedure.
3. If winch does operate freely, remove the drum bearings.
4. Clean the bearing spindle and housing of the winch of any dirt or salt deposits.
5. Lubricate the mainshaft and the pawls with light machine oil (see exploded drawing for pawl locations). Crank the winch while lubricating to be sure the oil is worked into the pawl areas and along the length of the mainshaft.
6. Grease the bearings with Barlube and install.
7. Reinstall the drum per the proper reassembly procedure.

LIMITED WARRANTY

Barient Company warrants each piece of equipment to be free from defects in materials and workmanship. Any part which proves to be defective in the normal use of the equipment will be replaced without charge. This Warranty does not apply to damage resulting from accident, neglect, or misuse, including repairs or alterations made by firms other than Barient Company.
