

“Happy Hour” Operating Instructions

Key points to operating Happy Hour:

- The maximum number of people onboard is 6.
- Life jackets must be worn at all times away from dock.
- You must bring a cell phone and answer any call from the Club during your rental.
- Driving Under the Influence is a serious legal offense. You can be stopped by marine police. The Club strongly recommends that operators do not drink any alcohol until back at dock.
- You may only operate Happy Hour within the permitted operating area. There is also a dangerous reef south of the Statue of Liberty.
- Happy Hour rocks in waves. All people onboard must remain seated in the cockpit while underway. No one is permitted to sit on the rail, or the bow or stern areas.
- You must stay out of the way of all other boats, including ferries, sightseeing boats, tugs & barges, sailboats, etc. Never cut in front of the bow of another boat.
- When operating “Happy Hour,” the maximum cruising speed is 1,750 RPM.
- Never go from forward into reverse without pausing in neutral for a few seconds.
- If you damage Happy Hour by jamming the gears, running her aground or into a buoy, dock or another boat, you will be responsible for the first \$3,000 in repairs.
- The bilge pump operates on its own. If there is enough water in the bilge to pump out, the float switch will trigger the bilge pump to operate.

Procedure for Turning Happy Hour ON & OFF

1. Check that the bilge is dry.

2. Main Battery Switch Under Seat - Never touch or change this. Always leave “ON.”

2. Main Breaker Switch – (right) Flip the white main breaker to the “ON” position (photo below). The gauge shows you 12V battery charge.



3. Activate Engine Power – (below) Push in the Engine Power Button. The batteries will then conduct a self-test which takes about 15 seconds. Look at the engine control panel to see it come on.



4. Put the Safety Kill Switch in position on the throttle – (right)

Place the magnetic orange Safety Kill Switch in its holder on the throttle. Loop the other end of the switch lanyard around your wrist.

If you fall out of the boat, the lanyard will pull the orange switch off the throttle and the engine will stop (i.e. the boat will not motor away and leave you behind).



5. Use throttle to put forward or reverse thrust - To turn the boat, you need forward thrust. Keep this in mind when coming to the dock. When in doubt, just slow down and fend off. Damage will happen if you try and go too fast in a tight situation.

6. Battery Gauge – (right) Happy Hour is equipped with a battery level indicator located on the top of the helm consul. The indicator is automatically activated when the engine is engaged. You may read the battery power level at any time while using the boat



1st Line – Battery Charge – Shows the amount of charge left in your batteries.

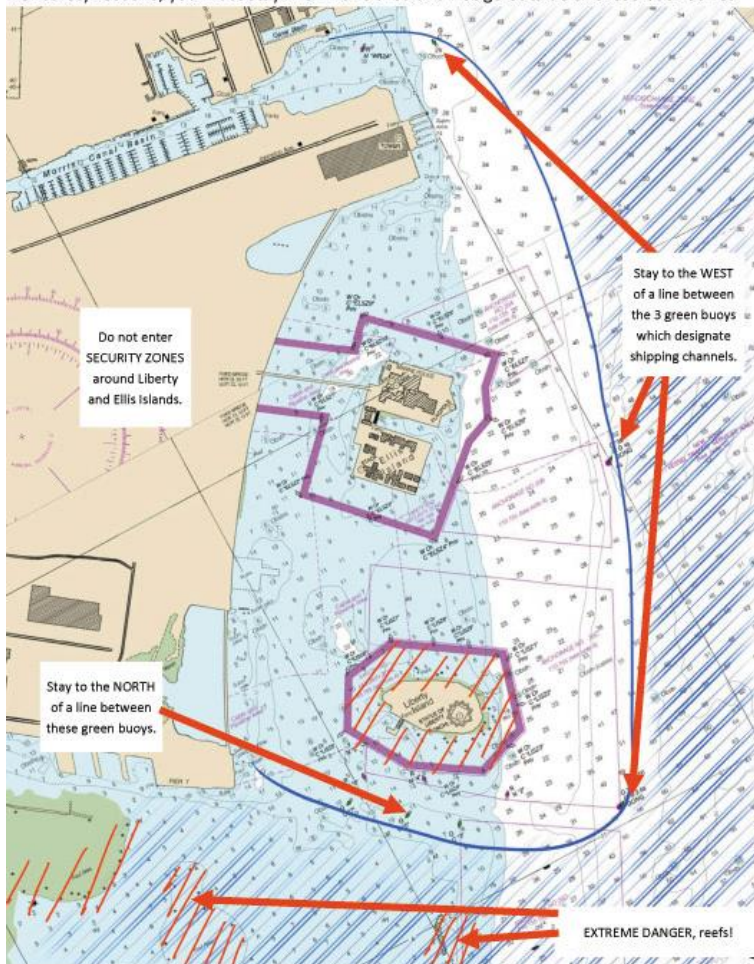
2nd Line – Run time remaining – Calculate the amount of time you have until your batteries run out of power.

3rd Line – Speed of your boat – Lets you see the approximate speed through the water. Keep in mind that the maximum speed is 6 knots.

4th Line – Engine draw (in Watts). Maximum permitted top cruising speed is 1750 Watts. If you run the engine faster than this, you will use up a lot more juice without increasing your speed. If you run your engine at 1750 Watts or below, you will get the most run time out of your batteries.

Permitted Cruising Area for “Happy Hour”

For safety reasons, you must stay within this area and not go outside of these boundaries.



7. Minimum Battery Charge - You should never operate at less than 20% of charge. Operating at lower than 20% of charge could seriously damage your batteries.

8. Procedure for Cleaning at the end of your Charter - At the end of every charter, Member must fully clean the boat and wash any surfaces with fresh water which may have gotten dirty with food or beverages. The Member is responsible for taking all garbage off the boat.

